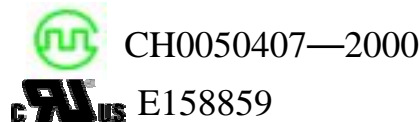




19.5×16.5×16.5

NT73 (JQC-3FC)



Features

- Superminiature, High power.
- Low coil power consumption.
- PC board mounting.
- Suitable for household appliance, automation system, electronic equipment, instrument and meter, communication facilities and remote control facilities.

Ordering Information

NT73 C S 10 DC12V F
1 2 3 4 5 6

1 Part number : NT73 (JQC-3FC)

2 Contact arrangement : A:1A ; B:1B ; C:1C

3 Enclosure : S: Sealed type

4 Contact Current : 5:5A ; 6:6A ; 10:10A ; 12:12A

5 Coil rated Voltage(V) : DC:3,4,5,6,9,12,24,36,48

6 Resistance Heat Class : NIL:130 ; F:155

Contact Data

Contact Arrangement	1A (SPSTNO) 1B (SPSTNC) 1C (SPDT(B-M))
Contact Material	Ag-CdO Ag-SnO ₂
Contact Rating (resistive)	5A,6A,10A,12A/125VAC,28VDC; 6A/277VAC; 5A,10A/250VAC
Max. Switching Power	336W 2500VA
Max. Switching Voltage	110VDC 380VAC
Contact Resistance or Voltage drop	≤100m
Operation life	Electrical 10 ⁵ Mechanical 10 ⁷
	Max. Switching Current:12A Item 3.12 of IEC255-7 Item 3.30 of IEC255-7 Item 3.31 of IEC255-7

Coil Parameter

Dash numbers	Coil voltage VDC		Coil resistance ±10%	Pickup voltage VDC(max) (75%of rated voltage)	release voltage VDC(min) (10% of rated voltage)	Coil power consumption W	Operate Time ms	Release Time ms
	Rated	Max.						
003-360	3	3.9	25	2.25	0.3	0.36	10	5
004-360	4.5	5.9	65	3.4	0.45			
005-360	5	6.5	69	3.75	0.5			
006-360	6	7.8	100	4.50	0.6			
009-360	9	11.7	225	6.75	0.9			
012-360	12	15.6	400	9.00	1.2			
024-360	24	31.2	1600	18.0	2.4			
028-360	28	36.4	2180	21.0	2.8			
036-360	36	46.8	3600	27.0	3.6			
048-360	48	62.4	6400	36.0	4.8			

CAUTION: 1.The use of any coil voltage less than the rated coil voltage will compromise the operation of the relay.
2.Pickup and release voltage are for test purposes only and are not to be used as design criteria.

Operation condition

Insulation Resistance	250M min (at 500VDC)	Item 7 of IEC255-5
Dielectric Strength		
Between contacts	50Hz 750V	Item 6 of IEC255-5
Between contact and coil	50Hz 1500V	Item 6 of IEC255-5
Shock resistance	100m/s ² 11ms	IEC68-2-27 Test Ea
Vibration resistance	10-55Hz double amplitude 1.5mm	IEC68-2-6 Test Fc
Terminal strength	5N	IEC68-2-21 Test Ua1
Scalability	235 ± 2 3 ± 0.5s	IEC68-2-20 Test Ta method 1
Ambient Temperature	-55~85	
Relative Humidity	93% (at 40 °C)	IEC68-2-3 Test Ca
Mass	10.5g	

Qualification inspection:

Perform the qualification test as specified in the table of IEC255-19-1 and minimum sample size 24.

Safety approvals

Safety approval	UL&CUR	CCEE
Load	10A/250VAC 28VDC 6A/277VAC Insulation : B-class F-class	5A/250VAC

Dimensions (Unit: mm)

	mm	inch
	0.3	0.012
	0.4	0.016
	0.5	0.020
	1.0	0.039
	1.3	0.051
	1.4	0.055
	2.0	0.079
	3.5	0.138
	6	0.236
	12	0.472
	12.2	0.480
	16.5	0.650
	19.5	0.768

Dimensions

Wiring diagram (Bottom views)

1A 1B 1C

NOTES 1).Dimensions are in millimeter.
2).Inch equivalents are given for general information only.

Reference Data

